



LAMBDA
THETA
ALPHA
foundation



2017
ANNUAL REPORT

FROM THE DESK OF THE PRESIDENT



A YEAR OF SUCCESS AND ADVANCEMENT

The Lambda Theta Alpha Foundation's mission is to enrich our communities by providing funding for educational programming, humanitarian relief, and scholarships. As a member of Lambda Theta Alpha, the existence of a Foundation which aids the less fortunate has always been a dream of mine. After several years of work organizing and creating the Foundation for the sorority, I can exclaim the dream has finally come true. It is no longer just a structure but an organization that is moving towards impacting the lives of others.

In 2017, the Lambda Theta Alpha Foundation was able to make great strides towards our mission. I am very proud and humbled by the work and support that the Foundation has seen in 2017, respectively. Throughout this report you will find a summary of donor contributions and how they were used to transform the lives of our community.

In 2018, the Foundation will continue to maximize its efforts by striving to reach its goals by establishing an annual scholarship program for qualifying students, delivering educational programming and resources to our community and continuing to increase our fundraising efforts to better serve our communities during humanitarian relief crisis.

We thank you for all your generosity, which helped us make a difference in the lives of the community around us. We look forward to what we will achieve together in 2018 and invite you to continue to harness your power to inspire a world of giving by joining us in achieving our mission

*TOGETHER we can continue to **ADVANCE OUR COMMUNITY** one person at a time!*

Sincerely,

A handwritten signature in black ink that reads "Merlix Reynolds". The script is fluid and cursive.

Merlix Reynolds
Foundation Founder and President
Lambda Theta Alpha Foundation, Inc.
info@ltafoundation.org

2017 BOARD OF DIRECTORS

In October 2017, the LTA Foundation was re-launched with the appointment of the following Directors:



DENISE C. VIDOT

Director of Administration

administration@ltafoundation.org



TIFFANY VEGA-GIBSON

Director of Finance

finance@ltafoundation.org



SANDRA REVUEKTAS

Director of Development

development@ltafoundation.org



CONNIE ARMHOLD

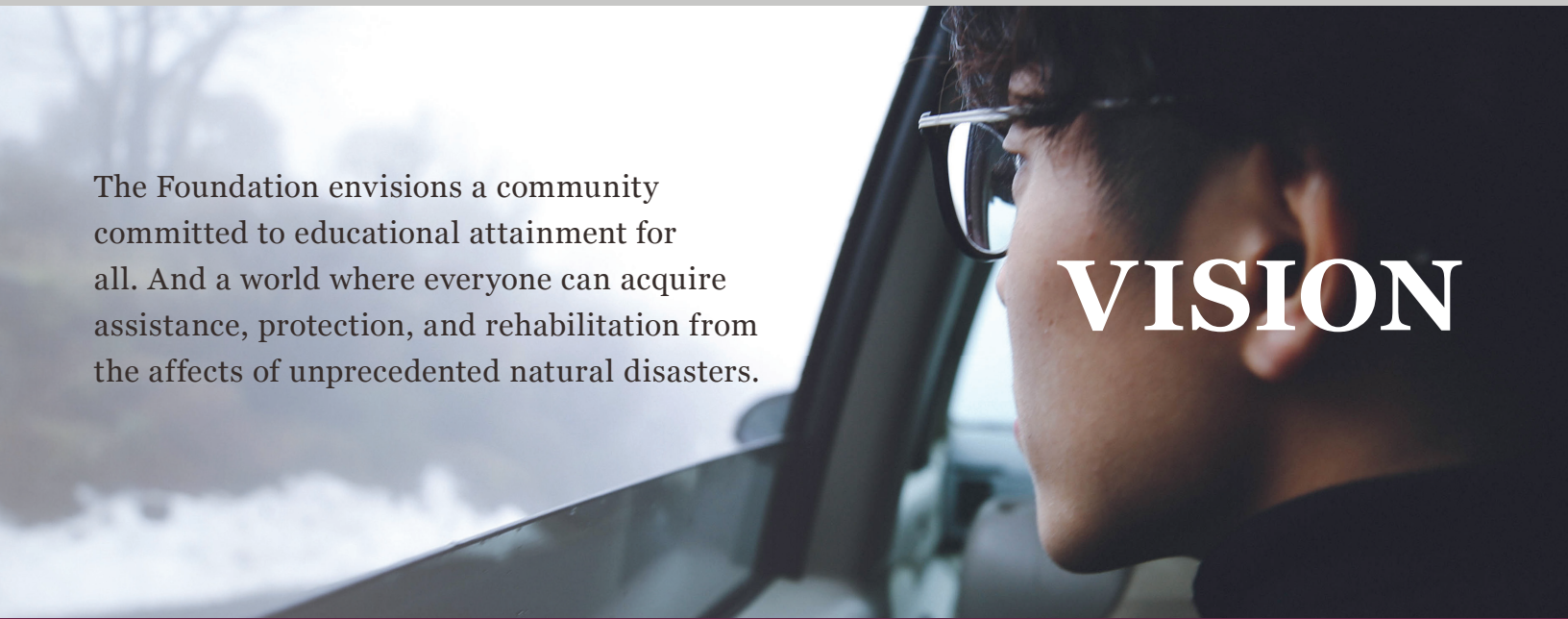
Director of Marketing and Communications

communications@ltafoundation.org

ABOUT THE FOUNDATION

MISSION

The Foundation's mission is tied to a commitment to advance the community. Our efforts promote enrichment to our communities by providing funding for educational programming, scholarship and humanitarian relief.

A photograph showing the side profile of a person with dark hair and glasses, looking out of a car window. The view outside the window is a snowy, hazy landscape with bare trees. The person is wearing a dark jacket.

The Foundation envisions a community committed to educational attainment for all. And a world where everyone can acquire assistance, protection, and rehabilitation from the affects of unprecedented natural disasters.

VISION

VALUES

The Foundation's success is driven by the following core values: passion to empower our community, dedication to embrace diversity and equality, a unified team that challenges one another to perform with integrity and above all respect to mankind.

2017 FUNDRAISING EFFORTS



HUMANITARIAN RELIEF

The Foundation launched its first fundraising initiative to support those impacted by the many natural disasters that occurred in 2017.

The Lambda Theta Alpha Latin Sorority, Inc. Board of Directors and National Advisors helped kick off the initiative by collectively donating \$1,000. With the support of Lambda Theta Alpha members and their network, the Foundation continued to raise funds throughout the remainder of 2017 and was able to raise an additional \$3,000.



As a result the Foundation awarded two \$500 stipends and 100 solar power lanterns to families that survived the various hurricanes of 2017.



“Spreading Love through
75 days of Giving”



GIVING TUESDAY

The Foundation participated in #GivingTuesday, a global day of giving that harnesses the collective power of individuals, communities, and organizations to encourage philanthropy and to celebrate generosity.

As a first time participant, the Foundation aimed to increase philanthropic awareness by encouraging its network of supporters to share why they give in a short video message. Supporters not only shared their reasons for giving but also donated \$1,000 in support.

#GI♥INGTUESDAY

FINANCIAL SUMMARY

In just a few months of 2017 the Foundation worked to raise money to support its mission. This summary provides an overview of how those funds were allocated.

Breakdown of funds

RAISED

\$7,000

from individual and corporate donors.

FUNDS USED

\$1,950

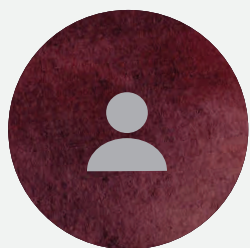
for humanitarian relief.

OPERATIONAL EXPENSES

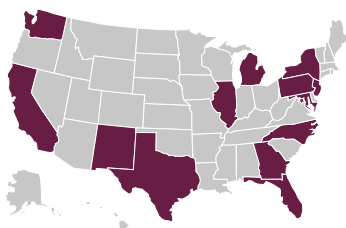
\$1,200

was spent on administration fees such as legal, supplies and marketing.

Breakdown of donors

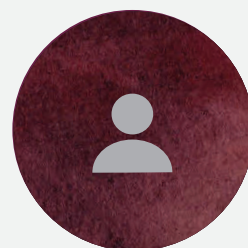


**111 LTA
DONORS**



13 STATES

donated in 2017 to the Foundation



**123
DONORS**

GRATITUDE

Only through your generosity can the Foundation achieve its mission. It is with tremendous gratitude that we honor our 2017 donors. We thank you for your continued support to help us make a difference in our community.

2017 DONORS

Luna Level Supporters (contributed \$100-\$499)

Audrey Weber
Connie Armhold
Denise Vidot
Greek Org Apparel
Jeanette Stone
LTA: Gamma Phi Chapter
LTA: Upsilon Chapter
Laura Ochoa
Lisandra Sanchez
Marina Serna
Merlix Reynolds
Michelle Grossman
Milena Orozco
Nathalie Canadas
Network for Good
Priscilla Scruggs
Rita Thomas
Thomasa Gonzalez

Perla Level Supporters (contributed up to \$99)

Abigail Farciert
Adela Llumpo
Adriana Rosas
Alexis Richbourg
Alysia DeJesus
Amarilis Pullen
Amelia Feliciano
Amethyst Thorman
Angeles Alamo
Anna Herrera
Anna Gerald
Antoimae Stafford
Angela Pagan
Ariel M Lopez Cueva
Ashlee Parra
Ashontee Billingsley
Beatriz Castillo
Brenda Vasconcelos Ramirez
Bridget Santana
Camille Fernandez
Catherine Tolentino
Cassie Cathcart
Celecita Williams
Claudia Salas
Claudia Trillo
Cristina Naranjo
Cristol Camacho
Crystal Avila-Flores
Cynthia Padillat
Cynthia Zavala
Daissy Diaz
David Westol
Darlene Castillo
Elisa Oliver
Elizabeth Lizama
Emily Vasquez
Evelyn Ambriz
Anonymous
Gabriella Ibarrondo
George Armhold
Germany Jimenez
Gloribel Santiago

Greenwood, Archer and Pine Foundation
Guadalupe Tello
Healing Hearts Holistic Center, LLC
Ileana Almaguer
Ileana Lopez
Ilia Napoleon
Lily Molina
Linette Encarnacion
Luisa Ruiz
Jamie Pereira
Jasmine Mageno
Jasmine Perez
Jasmine Wiggins
Jennifer Acuna
Jennifer Alcaraz
Jennifer Munoz
Jennifer Schulman
Jessica C. Aponte
Juanita Eby
Julianita Maestas
Karina Rodriguez
Katherine Espana
Katherine Hiraldo
Kenia Cruz
Lina Zapata
Luisa Ruiz
Lina Francis
Lena O'Brien
Lisa Carter
Lariza Mendoza
Maria Rivera
Marcela Valadez
Mabiorka Terrero
Maranielly Vazquez
Margarita Landeros
Mariana Cervantes
Melina Asencio
Milena Orozco
Miriam Ortiz
Natalie Gil
Nayelie Valenzuela
Nelly Gomez

Nichole Montanez
Nicole Vargas
Nydia Rios
Ofelia Oviedo
Olympia Paredes
Pamela Meneses
Paola Arreguin
Rebecca Martinez
Rocio Agundis
Rosa Diaz
Rossy Francisco
Sandra Revueltas
Sara Cruz
Selenny Fabre
Shoshana Brown
Sondra Pham
Stefanie Parchment
Tamara Duval
Tiffany Lozoya
Vanessa D'Ann Garcia
Wendy Castro
Yazmin Vargas
Yvette Rivera
Zuhai Rivera

RESOURCES ACQUIRED IN 2017



Acquisition of a donor engagement and fundraising tool.

AFFILIATES



AmazonSmile Foundation donates 0.5% of the prices of eligible purchases when the Foundation is selected by the customer as their non-profit of choice.

PARTNERSHIPS



The first Latin Sorority in the nation partnered with the Foundation to achieve it's mission.



2018 STRATEGIC GOALS

Our key goals are centered on our three pillars:



EDUCATIONAL PROGRAMMING

Sponsor at least two educational sessions centered around personal growth and development and/or how to impact local communities through philanthropic giving of time, talent and financial support.



HUMANITARIAN RELIEF

Raise **\$10,000** to support victims of natural disasters.



SCHOLARSHIP FUND

Establish a fund that can be used to issue at least 17 annual scholarships to deserving undergraduate or graduate students.

Lambda Theta Alpha Foundation, Inc.

Statement of Financial Position (unaudited)

Year ending December 31, 2017

ASSETS

Cash	\$13,692
TOTAL ASSETS	\$13,692

LIABILITIES AND EQUITY

Current Liabilities	\$500
Total Liabilities	\$500

Equity	\$13,192
Total Liabilities and Equity	\$13,692

Lambda Theta Alpha Foundation, Inc.

Statement of Activities (unaudited)

Year end December 31, 2017

TOTAL INCOME	
Corporate Grants	\$1,000
Individual Contributions	\$5,543
Merchandise Sales	\$2,164
TOTAL INCOME	\$ 8,707
COST OF GOODS SOLD	
	\$1,703
Gross Profit	\$7,005
EXPENSES	
Advertising and Marketing	\$614
Charitable Awards	\$1,000
Transaction Fees	\$142
General Business Expenses	\$143
Humanitarian Relief Supplies	\$943
Legal and Professional Services	\$138
Office Supplies and Software	\$87
Shipping, Freight and Delivery	\$115
Total Expenses	\$3,181
Net Income	\$3,824

The Lambda Theta Alpha Foundation's Board of Directors governs the work of the Foundation. The Board shapes the Foundation's direction and ensures that the resources and finances in place match the Foundation's mission to advance the community through scholarship, educational programing and humanitarian relief.

ltafoundation.org ◦ info@ltafoundation.org